

Online Appendix to
**Linking Individual and Collective Social Capital:
Operationalization, Association, and Sociodemographic
Heterogeneity**

Figure A1: The distribution of collective social capital (SC) at the state and county level (Source: Social Capital Project)

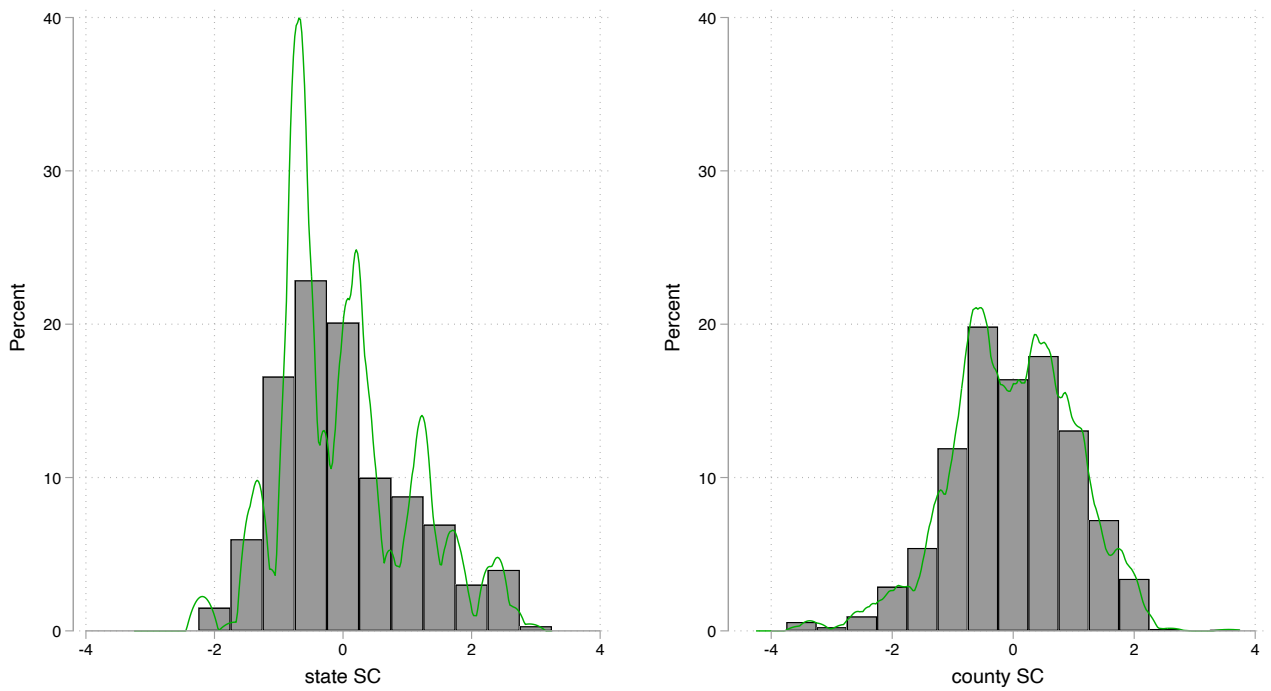


Table A1: Baseline Models of State and Individual Social Capital

	(1) Trust	(2) Confidence in institutions	(3) Social interaction	(4) Voted
state SC	0.077** (0.0099)	-0.015 (0.015)	-0.0040 (0.016)	0.019** (0.0045)
NH White	<i>ref.</i>	<i>ref.</i>	<i>ref.</i>	<i>ref.</i>
NH Black	-0.41** (0.031)	0.025 (0.035)	-0.084* (0.037)	0.047** (0.012)
NH Other	-0.10* (0.047)	0.14** (0.047)	-0.060 (0.052)	-0.079** (0.018)
Hispanic	-0.23** (0.030)	0.023 (0.062)	-0.16** (0.043)	-0.047 (0.024)
highest year of school completed	0.080** (0.0044)	-0.0030 (0.0027)	0.037** (0.0042)	0.041** (0.0015)
male	<i>ref.</i>	<i>ref.</i>	<i>ref.</i>	<i>ref.</i>
female	0.0036 (0.014)	0.012 (0.022)	-0.10** (0.019)	0.016** (0.0054)
married	<i>ref.</i>	<i>ref.</i>	<i>ref.</i>	<i>ref.</i>
widowed	-0.14** (0.031)	0.075 (0.046)	0.17** (0.048)	-0.076** (0.013)
divorced	-0.20** (0.025)	-0.041 (0.029)	0.22** (0.0079)	-0.10** (0.0079)
separated	-0.19** (0.040)	-0.079 (0.052)	0.22** (0.059)	-0.084** (0.018)
never married	-0.044 (0.030)	0.026 (0.038)	0.33** (0.041)	-0.059** (0.011)
age of respondent	0.016** (0.0031)	-0.039** (0.0032)	-0.028** (0.0038)	0.014** (0.0012)
age squared	-0.000041 (0.000030)	0.00035** (0.000030)	0.00013** (0.000035)	-0.000062** (0.000010)
religious service attendance	0.018** (0.0041)	0.030** (0.0037)	0.019** (0.0035)	0.020** (0.0016)
born in U.S.	<i>ref.</i>	<i>ref.</i>	<i>ref.</i>	<i>ref.</i>
not born in U.S.	-0.0021 (0.036)	0.23** (0.037)	-0.27** (0.047)	-0.19** (0.016)
12 lrgst smsa's	<i>ref.</i>	<i>ref.</i>	<i>ref.</i>	<i>ref.</i>
smsa's 13-100	-0.036 (0.029)	-0.064 (0.049)	-0.091 (0.047)	0.016 (0.016)
suburb, 12 lrgst	-0.036 (0.026)	-0.031 (0.049)	-0.034 (0.042)	0.010 (0.018)
suburb, 13-100	-0.090** (0.033)	-0.035 (0.054)	-0.053 (0.043)	0.014 (0.017)
other urban	-0.090** (0.034)	-0.048 (0.053)	-0.085* (0.041)	-0.017 (0.012)
other rural	-0.19** (0.041)	-0.078 (0.057)	-0.082 (0.045)	-0.022 (0.015)
family size (square root)	-0.033 (0.023)	0.051 (0.028)	-0.019 (0.023)	-0.034** (0.0072)
Constant	-1.45** (0.10)	0.95** (0.12)	0.51** (0.11)	-0.32** (0.043)
Year fixed effects	<i>Yes</i>	<i>Yes</i>	<i>Yes</i>	<i>Yes</i>
Observations	15202	14675	14612	22870

Standard errors in parentheses

* $p < .05$, ** $p < .01$, *** $p < .001$

Table A2: Baseline Models of County and Individual Social Capital

	(1) Trust	(2) Confidence in institutions	(3) Social interaction	(4) Voted
county SC	0.084** (0.013)	-0.0051 (0.017)	-0.0052 (0.015)	0.017** (0.0047)
NH White	<i>ref.</i>	<i>ref.</i>	<i>ref.</i>	<i>ref.</i>
NH Black	-0.39** (0.033)	0.028 (0.035)	-0.085* (0.037)	0.049** (0.012)
NH Other	-0.11* (0.047)	0.14** (0.047)	-0.060 (0.052)	-0.081** (0.018)
Hispanic	-0.23** (0.029)	0.027 (0.060)	-0.16** (0.044)	-0.048 (0.024)
highest year of school completed	0.079** (0.0045)	-0.0031 (0.0028)	0.037** (0.0042)	0.041** (0.0014)
male	<i>ref.</i>	<i>ref.</i>	<i>ref.</i>	<i>ref.</i>
female	0.0053 (0.014)	0.012 (0.022)	-0.10** (0.020)	0.016** (0.0055)
married	<i>ref.</i>	<i>ref.</i>	<i>ref.</i>	<i>ref.</i>
widowed	-0.14** (0.030)	0.076 (0.046)	0.17** (0.048)	-0.075** (0.013)
divorced	-0.20** (0.025)	-0.040 (0.029)	0.22** (0.0078)	-0.10** (0.0078)
separated	-0.19** (0.039)	-0.078 (0.052)	0.22** (0.059)	-0.084** (0.018)
never married	-0.037 (0.030)	0.025 (0.038)	0.33** (0.041)	-0.058** (0.011)
age of respondent	0.016** (0.0032)	-0.039** (0.0032)	-0.028** (0.0038)	0.014** (0.0012)
age squared	-0.000040 (0.000031)	0.00035** (0.000030)	0.00013** (0.000035)	-0.000061** (0.000010)
religious service attendance	0.018** (0.0040)	0.030** (0.0037)	0.019** (0.0036)	0.020** (0.0015)
born in U.S.	<i>ref.</i>	<i>ref.</i>	<i>ref.</i>	<i>ref.</i>
not born in U.S.	-0.0079 (0.036)	0.23** (0.036)	-0.27** (0.047)	-0.19** (0.016)
12 lrgst smsa's	<i>ref.</i>	<i>ref.</i>	<i>ref.</i>	<i>ref.</i>
smsa's 13-100	-0.030 (0.031)	-0.069 (0.050)	-0.092 (0.047)	0.019 (0.018)
suburb, 12 lrgst	-0.097* (0.046)	-0.029 (0.053)	-0.030 (0.042)	-0.0018 (0.021)
suburb, 13-100	-0.13** (0.036)	-0.037 (0.054)	-0.050 (0.043)	0.0064 (0.017)
other urban	-0.13** (0.036)	-0.050 (0.056)	-0.082 (0.042)	-0.023 (0.013)
other rural	-0.25** (0.042)	-0.079 (0.063)	-0.078 (0.046)	-0.032* (0.015)
family size (square root)	-0.033 (0.024)	0.051 (0.028)	-0.019 (0.023)	-0.034** (0.0072)
Constant	-1.41** (0.10)	0.95** (0.12)	0.51** (0.11)	-0.31** (0.044)
Year fixed effects	<i>Yes</i>	<i>Yes</i>	<i>Yes</i>	<i>Yes</i>
Observations	15202	14675	14612	22870

Standard errors in parentheses

* $p < .05$, ** $p < .01$, *** $p < .001$

Table A3: Interaction Coefficients of Models with Income Included (State Level)

	(1) Trust	(2) Confidence in institutions	(3) Social interaction	(4) Voted
family income (logged) × state SC	-0.0079 (0.0076)	0.019 (0.0096)	0.0095 (0.015)	-0.00053 (0.0041)
NH White × state SC	<i>ref.</i>	<i>ref.</i>	<i>ref.</i>	<i>ref.</i>
NH Black × state SC	-0.0055 (0.026)	-0.0020 (0.035)	0.0037 (0.037)	-0.024* (0.012)
NH Other × state SC	-0.018 (0.053)	-0.021 (0.042)	-0.020 (0.057)	0.072** (0.018)
Hispanic × state SC	0.052* (0.025)	-0.041 (0.031)	-0.0050 (0.033)	0.015 (0.020)
highest year of school completed × state SC	0.0088* (0.0034)	-0.0032 (0.0030)	-0.0019 (0.0045)	-0.0011 (0.0014)
male × state SC	<i>ref.</i>	<i>ref.</i>	<i>ref.</i>	<i>ref.</i>
female × state SC	-0.0055 (0.015)	0.034* (0.015)	0.076** (0.017)	-0.0051 (0.0056)
married × state SC	<i>ref.</i>	<i>ref.</i>	<i>ref.</i>	<i>ref.</i>
widowed × state SC	0.018 (0.026)	-0.077 (0.044)	0.054* (0.026)	-0.021* (0.0088)
divorced × state SC	-0.094** (0.022)	-0.012 (0.028)	-0.071** (0.022)	-0.012 (0.0076)
separated × state SC	-0.075 (0.040)	0.053 (0.055)	-0.11* (0.046)	0.013 (0.019)
never married × state SC	-0.060* (0.026)	-0.0012 (0.032)	-0.018 (0.028)	-0.0057 (0.0097)
Observations	13571	13112	13037	20580

Standard errors in parentheses

* $p < .05$, ** $p < .01$, *** $p < .001$

Note: Models also include main effects, control variables (listed in paper), and year fixed effects

Table A4: Interaction Coefficients of Models with Income Included (County Level)

	(1) Trust	(2) Confidence in institutions	(3) Social interaction	(4) Voted
family income (logged) × county SC	−0.00047 (0.0097)	0.018 (0.011)	0.016 (0.013)	0.00081 (0.0040)
NH White × county SC	<i>ref.</i>	<i>ref.</i>	<i>ref.</i>	<i>ref.</i>
NH Black × county SC	−0.024 (0.023)	0.034 (0.028)	−0.035 (0.026)	−0.019 (0.0100)
NH Other × county SC	0.0081 (0.049)	−0.013 (0.051)	−0.030 (0.046)	0.011 (0.020)
Hispanic × county SC	0.063 (0.034)	−0.010 (0.035)	0.013 (0.048)	0.0032 (0.026)
highest year of school completed × county SC	0.0072 (0.0036)	0.0031 (0.0038)	0.0012 (0.0045)	−0.00094 (0.0012)
male × county SC	<i>ref.</i>	<i>ref.</i>	<i>ref.</i>	<i>ref.</i>
female × county SC	0.0077 (0.014)	0.026 (0.015)	0.052* (0.022)	−0.014* (0.0070)
married × county SC	<i>ref.</i>	<i>ref.</i>	<i>ref.</i>	<i>ref.</i>
widowed × county SC	0.029 (0.039)	−0.0089 (0.040)	0.037 (0.040)	−0.021* (0.0096)
divorced × county SC	−0.076** (0.026)	−0.00060 (0.026)	−0.055 (0.030)	−0.021* (0.0088)
separated × county SC	−0.047 (0.047)	0.064 (0.051)	−0.076 (0.046)	0.0088 (0.015)
never married × county SC	−0.069* (0.026)	−0.030 (0.031)	0.00032 (0.025)	−0.0100 (0.011)
Observations	13571	13112	13037	20580

Standard errors in parentheses

* $p < .05$, ** $p < .01$, *** $p < .001$ *Note:* Models also include main effects, control variables (listed in paper), and year fixed effects